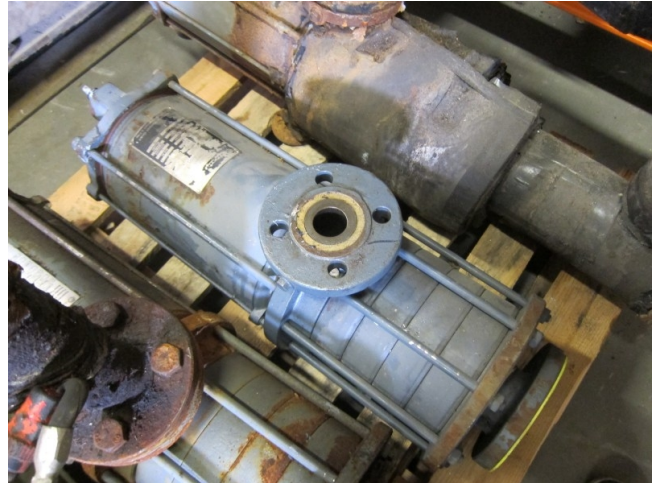


Hermetic CAM 2/5

Specifications

| | |
|---|-------------|
| Brand | Hermetic |
| Type | CAM 2/5 |
| Volume flow Q max. (m ³ /h) | 12,0 |
| Delivery height H max. (m) | 63,0 |
| Power max. (kW) | 4,5 |
| Remarks | Y.o.b. 1993 |
| Stock | 1 |



Description

Used Hermetic CAM 2/5

Used Hermetic CAM 2/5 liquid pump with the following specifications: Qmax: 12,0 m³/h - Hmax: 63 m - Pmax: 4,5 kW.

